

## Gold Swivels with Chain

The Gold Swivel allows the chain to rotate a full 360° around the attachment, eliminating the need to plan a path of insertion before bond placement. No matter where the Swivel is placed, the Gold Chain can be tied wherever desired.

The Gold Swivel also facilitates easy attachment placement. The Micro Tweezer tip will fit securely into the Swivel giving total control of the attachment.



Gold Mesh Disk 6 mm Cat. No. 248-065



Mini Gold Mesh Disk 4.5 mm Cat. No. 248-070

Either the 4.5 mm or the 6 mm Gold Mesh Disk are the only attachments appropriate to use with a light cure system. The bonding resin will be totally cured since the curing light will reach all the adhesive through the open mesh. If a solid bond is used with a light cure system, the resin under the bond will never cure. In addition the Gold Mesh Disk can easily be cut or bent to fit any size surface adding the retention of bonding to a proximal edge.



Gold Eyelet Cat. No. 248-075

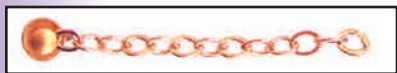
The Gold Eyelet is the perfect attachment for use with Self Cure systems. The Swivel provides 360° rotation of the Gold Chain while the light weight pad pas provides superb bonding retention and will stay exactly where placed as the resin self cures.

## Gold Buttons and Cleat with Chain



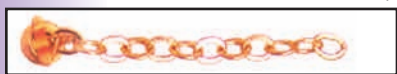
Standard 5 mm Gold Button Cat. No. 248-025

The Standard 5 mm Gold Button with Chain has been the most requested cuspid attachment by orthodontists for over 20 years. The 5 mm Button is the ideal size for 95% of all impacted teeth.



Mini 4 mm Gold Button Cat. No. 248-055

The Mini 4 mm Gold Button with Chain is needed for those teeth where the entire lingual or labial surface can not be exposed. While the base is only 65% of the bonding surface of a 5 mm Button, the 4 mm Button is adequate for cuspid traction.



Gold Cleat Cat. No. 248-015

The Gold Cleat was the original cuspid attachment and is still popular.

## Gold "V" Mesh with Chain



Gold "V" Mesh Cat. No. 248-035

The Gold "V" Mesh is an extra heavy mesh which can be cut to any size or shape and will retain that shape. Although usable in every situation, it is ideal for bonding to incisal tips or proximal edges.

**GOLD CUSPID ATTACHMENTS with CHAIN**

1 to 4 - \$15.00 each	as low as <b>\$ 10<sup>00</sup></b> each
5 to 9 - \$14.00 each	
10 to 19 - \$13.00 each	
20 to 49 - \$12.00 each	
50 plus - \$10.00 each	

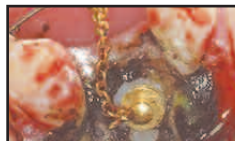
MIX STYLES FOR QUANTITY PRICE



**SWIVEL** - allows the chain to rotate a full 360° around the bond eliminating the need to identify a path of insertion before bond placement. Micro Tweezer tip fits into Swivel to give accurate placement control.



**GOLD MESH PAD** - can easily be cut to any fit any available bonding surface with a wire cutter or strong scissors. The Mesh can also be adapted to any curvature or even bent over a proximal edge.



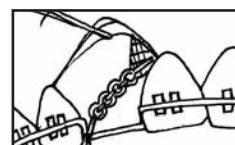
**STANDARD 5 mm GOLD BUTTON** -This attachment has been preferred by orthodontists for over 20 years. The Button is the ideal size for the lingual surface of most impacted cuspids and is easy to place using the Mini Tweezer.



**MINI 4 mm GOLD BUTTON** - This attachment is excellent in limited spaces providing adequate bonding surface for the adhesive. The Mini Tweezer fits under the Button and provides secure control.



**GOLD CLEAT** - was the first attachment used for impacted cuspids and is still in use today. Orthodontists like the high cleat wings which are easy to tie for final extrusion.



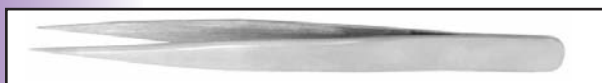
**GOLD "V" MESH with Chain** has been cut and contoured to fit over the barely visible incisal cusp tip of an impacted cuspid. Although the labial area is tiny, the combined surfaces of the entire tip is sufficient for bonding and subsequent traction. Here the chain has been tied with elastic thread for eruption and distalization.

SEE OUR COMPLETE IMPACTED CUSPID TECHNIQUE MANUAL WITH OVER 100 PHOTOS IN ORALSURGERYSOURCE CATALOG NO. 49 ON THE WEB AT [www.orthosourceonline.com](http://www.orthosourceonline.com)

## MINI BONDING TWEEZERS - EASY PLACEMENT OF SMALL ATTACHMENTS

- Easily picks up and securely holds all attachments.
- 5 different styles cover all placement situations.

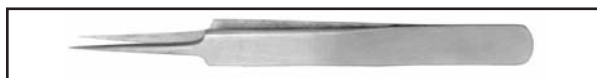
1 to 4 Tweezers - \$ 22.00 each  
5 to 9 Tweezers - \$ 20.00 each  
10 + Tweezers - \$ 18.00 each



Long - Cat. No. 878-021



Curved 45° - Cat. No. 878-023



Short - Cat. No. 878-020



Angled 30° - Cat. No. 878-022



Bayonet - Cat. No. 878-024



Fine tips securely hold the tiniest attachment

SPECIAL

Cat. No. 878-030

5 TWEEZERS

One of each style

\$ 90.00